

Box Score Report

PHS @ EPJ - Jan 16, 2025 - L 36-52

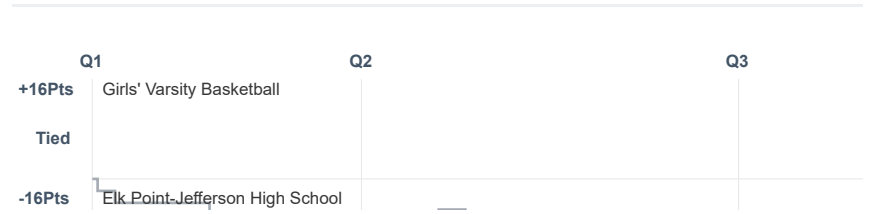
Period Stats

Team	1	2	3	4	Final
PHS	4	11	8	13	36
EPJ	13	11	10	18	52

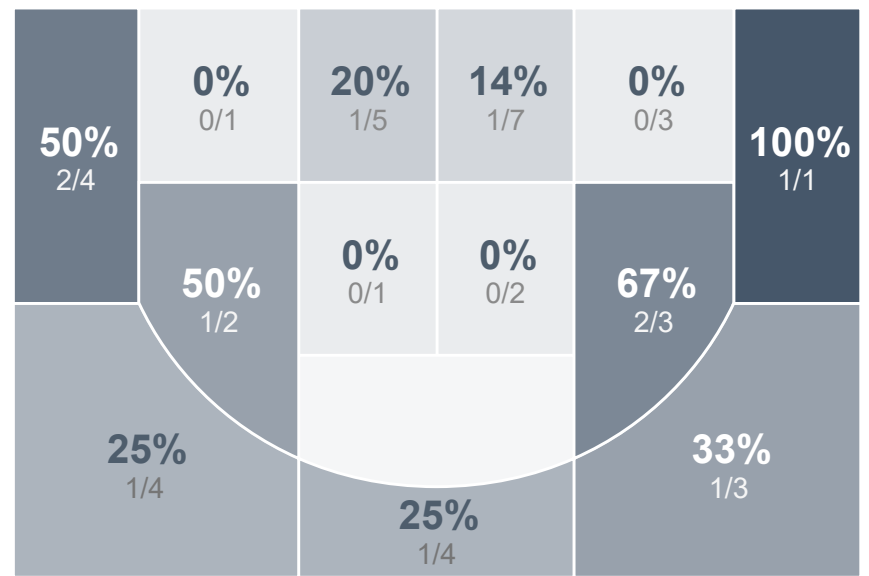
Team Stats

	PHS	EPJ
Field Goal %	27.5%	43.6%
Effective Field Goal %	35.0%	56.4%
2FG Made/Attempted	5/24	7/18
2FG%	20.8%	38.9%
3FG Made/Attempted	6/16	10/21
3FG%	37.5%	47.6%
FT Made/Attempted	8/10	8/12
Free Throw Percentage	80.0%	66.7%
Points Per Possession	0.70	1.09
Transition Points	2	6
Points Off Turnovers	6	21
Second Chance Points	9	4
Points in the Paint	4	12
Offensive Rebounds	10	7
Defensive Rebounds	17	16
Assists	8	12
Deflections	8	13
Steals	2	10
Blocks	2	2
Turnovers	17	10
Personal Fouls	15	10
Charges Taken	1	0

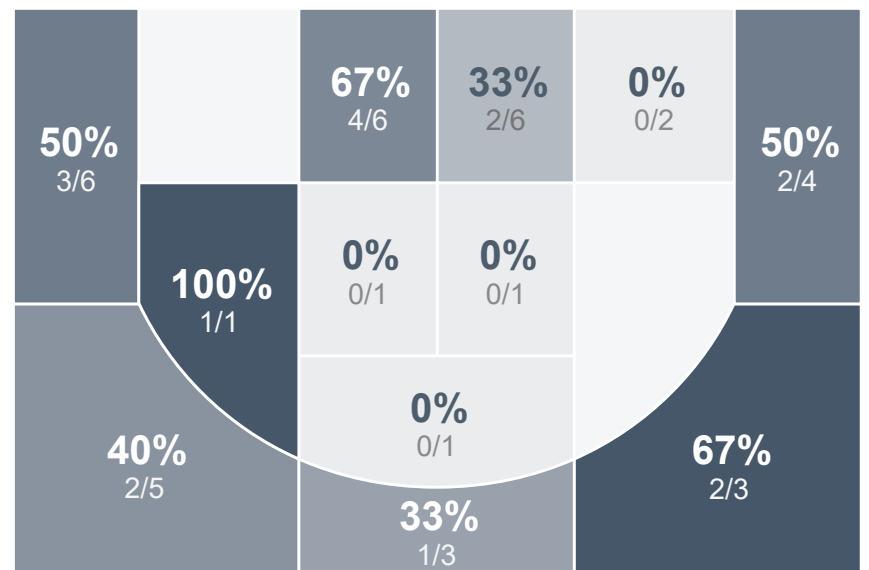
Run Graph



Girls' Varsity Basketball



Elk Point-Jefferson High School



Girls' Varsity Basketball's Player Stats

Name	Pts	FG	3FG	FT	+/-	MINS	OREB	DREB	AST	DEFL	STL	BLK	TO	FOUL	CHG
#12 Carlee Beckner	0	0/2	0/0	0/0	+ 5	6	1	1	0	0	0	0	0	0	0
#20 Elsie Keller	14	5/10	2/6	2/2	- 16	33	0	3	1	4	1	0	4	3	0
#22 Ava Brennan	0	0/0	0/0	0/0	- 1	3	0	1	0	0	0	0	0	1	0
#24 Ava Voss	1	0/1	0/0	1/2	- 27	24	1	0	0	1	0	0	1	2	1
#30 Jaelen Templeman	8	3/7	2/4	0/0	- 8	19	0	3	1	1	0	0	1	2	0
#32 Laken Pfister	5	1/5	1/2	2/2	- 6	17	0	0	0	1	0	1	2	3	0
#34 Ava Brown	4	1/7	1/3	1/2	- 12	29	1	3	5	0	1	0	2	1	0
#42 Emma Uthof	0	0/0	0/0	0/0	+ 5	4	0	0	0	0	0	0	1	0	0
#44 Emerson Ehlers	4	1/8	0/1	2/2	- 20	31	4	6	1	1	0	1	4	3	0

Elk Point-Jefferson High School's Player Stats

Name	Pts	FG	3FG	FT	+/-	MINS	OREB	DREB	AST	DEFL	STL	BLK	TO	FOUL	CHG
#1 Kaitlyn Van Roekel	8	3/9	0/3	2/3	+ 19	30	1	3	3	3	3	0	2	1	0
#2 Molly Geary	0	0/2	0/1	0/0	0	10	0	0	0	0	0	0	0	2	0
#3 Makinley Hammitt	5	1/2	1/2	2/2	0	6	0	1	0	0	0	0	0	0	0
#4 Ashley Brewer	8	3/7	2/4	0/0	+ 23	25	0	3	1	0	0	1	2	3	0
#10 Samantha Marx	0	0/0	0/0	0/0	+ 3	1	1	0	0	0	0	0	0	0	0
#11 Grace Peed	0	0/0	0/0	0/0	- 1	6	0	1	0	0	0	0	1	0	0
#14 Bentlee Kollbaum	10	3/7	1/2	3/5	+ 12	26	1	4	3	3	4	1	1	2	0
#15 Cera Schmitz	5	2/6	1/4	0/0	+ 14	24	1	1	3	5	1	0	2	0	0
#30 Elise Forna	0	0/0	0/0	0/0	- 10	11	1	1	0	0	0	0	1	1	0
#32 Courtney Brewer	16	5/6	5/5	1/2	+ 20	25	2	1	2	2	2	0	1	1	0