

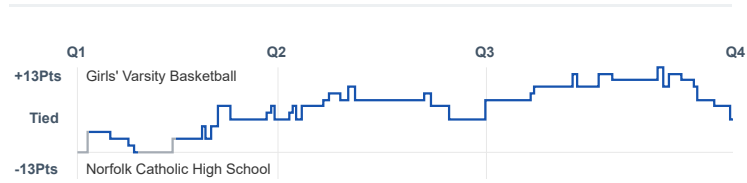
# Box Score Report

PHS @ NCHS - Feb 14, 2025 - W 49-46

## Period Stats

Team	1	2	3	4	Final
PHS	14	12	13	10	49
NCHS	9	9	13	15	46

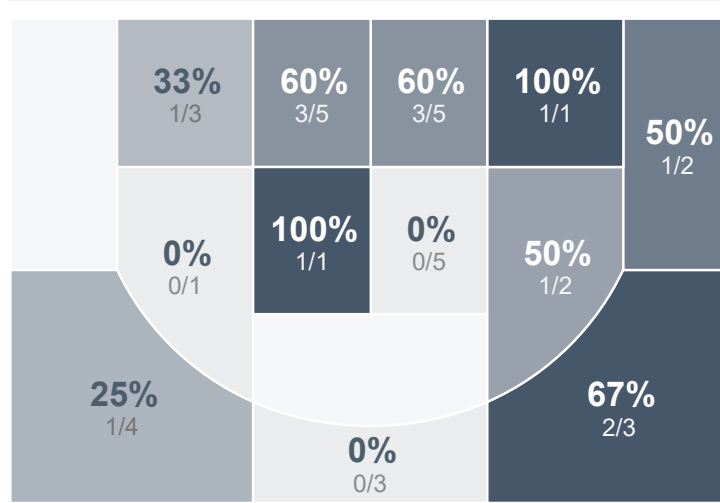
## Run Graph



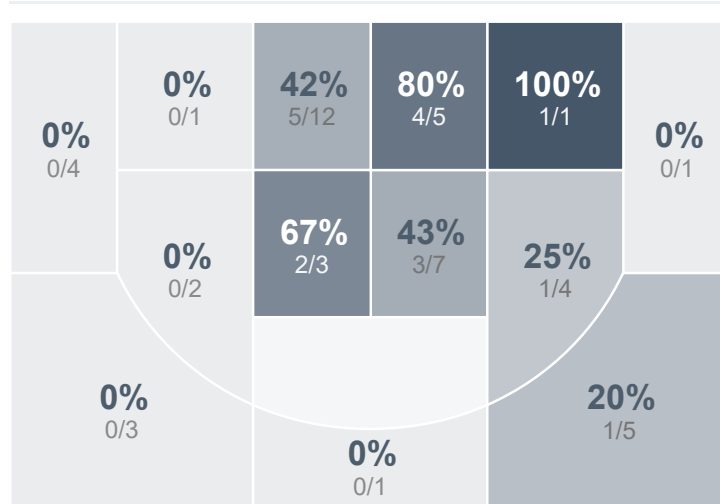
## Team Stats

	PHS	NCHS
Field Goal %	40.0%	34.7%
Effective Field Goal %	45.7%	35.7%
2FG Made/Attempted	10/23	16/35
2FG%	43.5%	45.7%
3FG Made/Attempted	4/12	1/14
3FG%	33.3%	7.1%
FT Made/Attempted	17/26	11/25
Free Throw Percentage	65.4%	44.0%
Points Per Possession	0.89	0.81
Transition Points	3	8
Points Off Turnovers	10	14
Second Chance Points	7	17
Points in the Paint	14	28
Offensive Rebounds	11	12
Defensive Rebounds	22	12
Assists	8	9
Deflections	6	12
Steals	6	12
Blocks	0	2
Turnovers	19	8
Personal Fouls	17	21
Charges Taken	0	0

## Girls' Varsity Basketball



## Norfolk Catholic High School



## Girls' Varsity Basketball's Player Stats

Name	Pts	FG	3FG	FT	+/-	MINS	OREB	DREB	AST	DEFL	STL	BLK	TO	FOUL	CHG
#12 Carlee Beckner	6	1/2	1/1	3/4	- 2	26	0	1	0	0	0	0	1	2	0
#20 Elsie Keller	15	4/10	0/2	7/8	+ 8	30	2	6	6	2	5	0	8	4	0
#24 Ava Voss	5	2/2	1/1	0/0	0	21	0	2	0	0	0	0	3	2	0
#30 Jaelen Templeman	8	2/6	1/2	3/4	+ 2	20	0	1	0	0	0	0	2	0	0
#32 Laken Pfister	5	1/6	1/4	2/4	+ 5	17	2	1	1	1	0	0	3	2	0
#34 Ava Brown	6	2/4	0/1	2/4	+ 3	26	3	3	1	3	1	0	1	2	0
#42 Emma Uthof	0	0/1	0/0	0/0	+ 5	7	0	2	0	0	0	0	0	1	0
#44 Emerson Ehlers	4	2/4	0/1	0/2	- 6	19	1	4	0	0	0	0	1	4	0

## Norfolk Catholic High School's Player Stats

Name	Pts	FG	3FG	FT	+/-	MINS	OREB	DREB	AST	DEFL	STL	BLK	TO	FOUL	CHG
#0 Grace Kosch	0	0/3	0/2	0/0	- 4	7	0	0	0	1	0	0	0	0	0
#1 Jacey Wolf	9	3/4	0/1	3/6	+ 2	20	0	0	1	2	3	0	0	0	0
#2 Hannah Hoelsing	0	0/5	0/5	0/0	+ 3	28	1	1	1	1	4	0	0	3	0
#3 Avery Yosten	7	3/8	0/0	1/2	- 10	21	2	3	1	1	1	0	5	5	0
#5 Hanna Brummer	20	8/16	1/2	3/9	- 3	32	3	7	3	3	1	0	2	2	0
#10 Mallory Wolf	2	1/6	0/3	0/0	- 11	22	1	1	2	0	1	1	1	3	0
#11 Madison Gordon	0	0/0	0/0	0/0	- 5	2	0	0	0	0	0	0	0	0	0
#12 Eva Hartzell	5	1/6	0/1	3/6	+ 5	23	3	0	1	2	2	1	0	3	0
#13 Jamaya Koehlmoos	3	1/1	0/0	1/2	+ 8	11	1	0	0	2	0	0	0	5	0